

Welcome to the sixteenth edition of the Kentish e-news! All operators are encouraged to submit articles on a bi-monthly basis regarding new promotions or changes to tourism-related business to update other business operators on new developments within the Kentish region.

We encourage feedback, comments or suggestions from tourism operators about Kentish e-news to enable the newsletter to be as user-friendly as possible. This edition's featured image is Cradle Mountain, photographed by Dan Fellow © All Rights



Kentish Visitor Information Centre

5 Pioneer Crescent, SHEFFIELD TAS. Ph 03 6491 1036 or email kvic@kentish.tas.gov.au



Kentish Visitor Information Centre would like to wish all visitors and the local Kentish community a very merry Christmas and happy 2012!

Drop into the centre and let our friendly and professional staff book your accommodation, tours and provide information on attractions and activities within the region and around Tasmania.

'Story of the Sheffield Murals' audio tour is a 'must do' when visiting Sheffield and can be hired daily from the visitor centre.

On Trak Gallery

Kentish Visitor Information Centre houses the new **On Trak Gallery**. The gallery has locally produced arts and crafts for sale. Paintings, handmade paper, pottery, jewellery, silverwork, glass, felting, photography and woodwork are on display.

More arts and crafts can be found at the **Working Art Space** in Albert St, Sheffield (open daily from 10am-3pm during daylight saving).

More treasures can be found at the nearby **Railton Arts and Crafts Shop**.

Page Two
**2012 Pure Tasmania
Cycle Challenge**

**Wilmot Hills
Vineyard**

**Wilmot Country
Store**

Page Three
Tasmazia

**Horse Drawn
Carriages Tasmania**

Friday Nite Folk

IN THIS ISSUE

Kentish Events

1-8 Jan - Redwater Creek Steam & Heritage Railway
7 Jan - Wilmot Market
21 Jan - Sheffield Town Hall Market
4-5 Jan - Redwater Creek Steam & Heritage Railway
4 Feb - Wilmot Market
18 Feb - Sheffield Town Hall Market
18-19 Feb - State Rowing Championships
26 Feb - 2012 Pure Tasmania Cycle Challenge

For further information on events, accommodation and attractions visit www.sheffieldcradleinfo.com.au or check out our Facebook Page <http://www.facebook.com/#!/KVIC7306>

To update or remove your details on the Kentish e-news mailing list, please contact:

Vicki Saunders Tourism Development Officer
5 Pioneer Crescent SHEFFIELD TAS 7306

Ph: 03 6491 1036 | Email: vicki@kentish.tas.gov.au | www.sheffieldcradleinfo.com.au

Events



2012 Pure Tasmania Cycle Challenge

February 26 2012

The **Pure Tasmania Cycle Challenge** will be held on Sunday, 26th February, 2012.

There are two ride distances to choose from; Devonport to Strahan - 219km and Cradle Mountain to Strahan - 139km.

The two ride options depart on the same day from different locations at different times and finish together in Strahan in the afternoon.

The Devonport to Strahan ride departs the Devonport Surf Life Saving Club at 6.00am sharp.

The Cradle Mountain to Strahan ride departs the Cradle Mountain Chateau at 10.00am.

Please see the Event Manual for further details on marshaling times for the mass starts.

Both ride options are simply sensational. There is no better way to experience a true taste of Tasmania's pure, untamed wilderness and stunning countryside. Sections of this ride are simply breathtaking and will be an experience you will never forget.

Our event catch cry is, DISCOVER IT, EXPERIENCE IT, LIVE IT, RIDE IT and captures what this event is all about. Make your next calendar event the Pure Tasmania Cycle Challenge

Check out <http://www.puretasmaniacyclechallenge.com.au/website/FAQ.html> for more details.



Wilmot Hills Vineyard Wilmot

Picturesque Wilmot Hills Vineyard was originally established on a green field in the hills just above Wilmot village and is now celebrating its 20th year!

This quaint winery and distillery has 4 delicious spirits to sample. All are at 40% al/vol. John's pride and joy is the apple brandy (Calvados), distilled from pure apple cider which has been grown and made on the premises. Tastings are free of charge and explanations of the processes are freely given if requested.

The 150 litre reflux still produces high quality spirits. Our popular elderflower dessert wine is selling at a special price of \$9 per 375 ml bottle (the previous vintage won a gold medal) and makes a wonderful Christmas present.

407 Back Road, Wilmot (off C143), Wilmot Ph: 03 6492 1193

Wilmot Country Store

"The Original Coles Store" wishes everyone a very Merry Christmas and a safe and Happy New Year for 2012. 2011 has been busy and we look forward to another busy year in 2012. We already have an expected flurry of overseas and interstate travelers calling in on their travels.

Congratulations to everyone nominated for a Tasmanian Tourism award this year. We are very proud to say that we were in the final **Top 10 businesses in the People's Choice** section of the awards this year. Thank you to all who took the time to complete the customer survey forms.

A journalist from AUSTRALIAN GEOGRAPHIC magazine recently spent a few days in Wilmot. He wrote an article for the Jan/Feb 2012 issue, covering the town of Wilmot and the Wilmot Country Store. Keep an eye out for this issue. He thoroughly enjoyed the hospitality of our town and was keen to promote the beauty of this area.

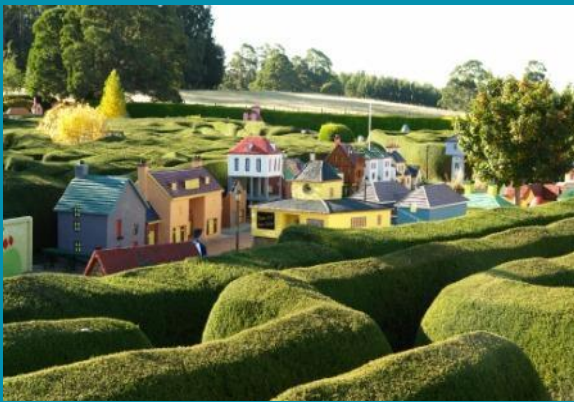
Our Tea Room and Tea Garden are proving to be very popular again this year with repeat bookings for lunches and morning teas. Our phone number is not in the current Telstra telephone book but we are always contactable on 03 6492 1335. Our operating hours are Monday 7am - 7pm, Saturday 9am - 6pm, Sundays and Public Holidays 9am - 4pm. Please note we are closed on Christmas Day.

PROMISED LAND

Changes Happening at Tasmazia!

Tasmazia recently opened the new 'Noodle Shack', selling a variety of freshly made noodle dishes. Prompted by interest from the public, Tasmazia has set up an area next to the Pancake Parlour where soft drinks and noodles are available for purchase. An undercover picnic area has more than doubled seating capacity. More picnic facilities are now available and people are encouraged to come see all the changes.

Tasmazia has just increased the fee for adults to \$20.00 and seniors to \$18.00 after many years where the entry fee has remained stable. The fee for children (4-15 years) remains at \$10.00, and children under 4 years of age are still free. Tasmazia is located near Sheffield at 500 Staverton Rd, Promised Land. Call 03 6491 1934 for further information.



Horse Drawn Carriages Tasmania

Sharon and Chris Hearle operate a quality horse drawn carriage service specialising in weddings and special occasions. The business services all areas of the state.

Discovering that most horse and carriage businesses around the world cater for weddings, special events and funerals, Chris and Sharon imported a new Hearse from Poland. A sight to behold, a local funeral business has already expressed a very keen interest in the carriage. A "good send off" not only for horse lovers, but to those seeking that little extra touch of distinction! It's the first time in a long time that such a service has been offered to the Kentish area, and indeed the whole state of Tasmania.

It is just another case of people in Sheffield not being afraid of having a GO.



Friday Nite Folk

Skwiz Cafe

63 Main Street, Sheffield 7306 Ph: 03 6425 7433

FRED SMITH – FRIDAY JANUARY 13, 2012

Fred Smith's album, 'Dust of Uruzgan' is chocka-block full of songs you hear and wish you had written yourself. Arresting, insightful and packed full of gritty detail, Fred Smith's songs literally bash down the doors of national understanding and conscience. If there is any justice in the world, this album will be a major hit. Fred Smith is known on the Australian and international festival circuit for his comic performances, and there is a thread of dark humour running through 'Dust of Uruzgan'. It serves as a counter weight to the darker territory explored in many of the songs, and opens the listener up to a more personal and three dimensional understanding of the experience of soldiers and civilians in Afghanistan.

THE BLOODY TAYLORS – FRIDAY JANUARY 27, 2012

The Bloody Taylors started out many years ago as a cunning ploy to get into a music festival for free. The guy at the gate went for it and they have been hamming it up on stage ever since. Alan Taylor, the patriarch of the Bloody Taylors, has played at festivals around Tasmania for many years. His duo with John Malcolm spawned such classics as "There Once Was a Farmer" and contributed to the "Tasmanian National Anthem". He taught in several High Schools in the Launceston area. He has now retired to the status of Living Artist, reciting his poetry and inspiring many young people to ridiculously artistic pursuits.

PHIL EDGELEY - FRIDAY FEBRUARY 24, 2012

Phil Edgeley plays the blues solo. He has rubbed shoulders with the likes of Jeff Lang, The Backsliders, Ian Moss, Tex Perkins and Ash Grunwald at Thredbo, Moruya, Howden (UK), Illawarra, Manly, St. Albans, Berry and Newcastle Festivals. From Lincolnshire, Edgeley has blazed a foot-stompin', blues-drenched path without ever looking back, armed with his trademark Churchill acoustic and National resonator guitars. Not forgetting a little Tim Kill Weissenborn wizardry, wrenching the living blues out of the very soul of any venue he cares to play.

DISCLAIMER

Although due care has been undertaken in compiling and producing information within this newsletter, Kentish Council does not guarantee the accuracy, completeness or currency of any information submitted by operators.

Vicki Saunders Tourism Development Officer
5 Pioneer Crescent SHEFFIELD TAS 7306

Ph: 03 6491 1036 | Email: vicki@kentish.tas.gov.au | www.sheffieldcradleinfo.com.au